

Public Safety & Corrections

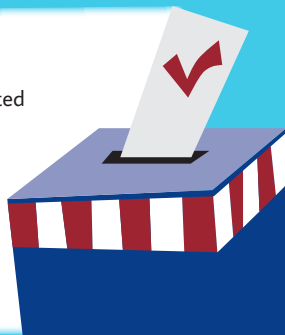
Oklahoma's counties invested more than **\$254 MILLION** in *Sheriff Departments & Jails* in 2013 for public safety.



Oklahoma's county jails have a combined **14,142 Bed Capacity.**

Elections

Oklahoma's counties oversaw voting at **2,021** *polling places* and coordinated **7,489** *poll workers* in 2012 at a cost of more than **\$10 MILLION** to county budgets.



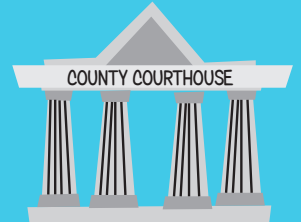
SOURCES:

Oklahoma Cooperative Extension Service,
Oklahoma State University
U.S. Election Assistance Commission
NACo, National Association of Counties
AMC, Association of Minnesota Counties
ACCO, Association of County Commissioners of Oklahoma

WHY Oklahoma Counties MATTER!

General Government

231 *commissioners* serve on Oklahoma's **77** *county boards.*



Oklahoma's counties spent **\$1.2 BILLION** providing a *wide array of essential services* to Oklahoma's citizens in 2013.



14,945 Oklahomans were *employed* by counties in full-time positions in 2014.



COUNTY P.L.E.A.S.E.

Providing, Local, Efficient, Accountable, Services, Everyday!

Health & Human Services

Oklahoma's counties spent more than **\$17 MILLION** *funding Community Health Departments & Hospitals* in 2013.



Oklahoma's 77 counties provide the essential services to create healthy, vibrant, and safe communities.

County government enforces laws, ensures public safety, builds and maintains roads, maintains official records, coordinates elections and plays a role in the physical health and welfare of its citizens.

Oklahomans depend on counties to maintain the peace, protect health and property, promote economic development and enhance their economic welfare. Counties are instrumental in the day-to-day life of all Oklahomans.

Transportation & Infrastructure

Oklahoma has **83,967** miles of county roads which means that **75%**

of Oklahoma roads are county-maintained.



There are currently **13,451** bridges in the county system.

62% of all Oklahoma's bridges

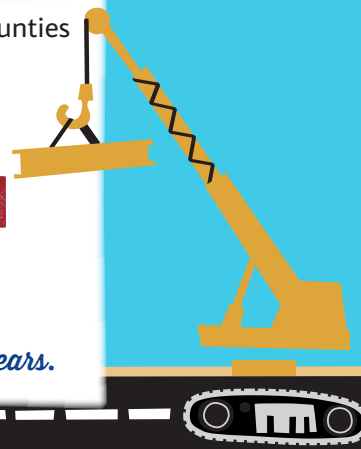
The *daily* vehicle miles traveled on the county highway system is

13,600,000
MILES.

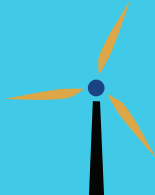
Oklahoma's counties will invest

\$903
MILLION

in *building* roads and bridges in the *next 5 years.*



Oklahoma's counties maintain **4,536** miles of *city streets* within **493** cities.



Oklahoma's *economic engines* (oil, gas, wind, & agriculture)

are **DEPENDENT** upon county transportation infrastructure for their *success.*